

High-speed, high-efficiency Construction Hoists

new construction hoists are reliable and efficient high-speed construction hoists, offering simplicity of operation, ease of installation and intelligent design with a low total cost of ownership.



Economical

Low cost of ownership for construction and rental companies through durability, accessibility and easy installation and dismantling.



Smooth Operation

Frequency control provides smooth starting and stopping with a low starting current and less wear and tear.



Robust Design

A robust car design with a choice of door and ramp options ensure maximum usability and extended equipment life.



Proven Technology

An easy-to-use control system, based on proven technology, allows for simple operation and ease of use.

Main Characteristics

Safety

Mechanical interlocking door system to guarantee the highest safety standards.

Reliability

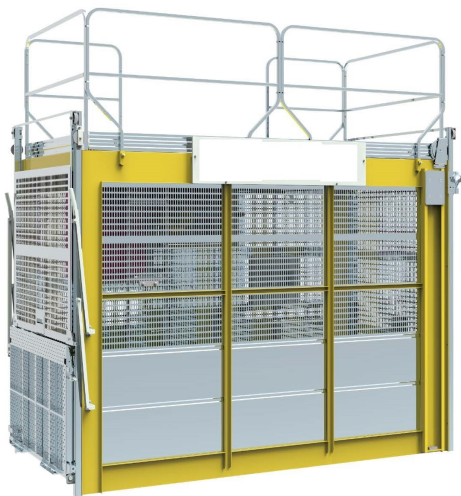
High strength steel extends equipment life and reduces dead weight, with a robust design, based on proven technology, the construction hoists are reliable hoist solution that deliver when you need it to.

Efficiency

A high-efficiency helical gearbox assures (75%) lower power consumption and operating costs, compared to competitors' hoist products. Built-in electrical cabinet maximises internal hoist dimensions for increased lifting capacity.

Ergonomic

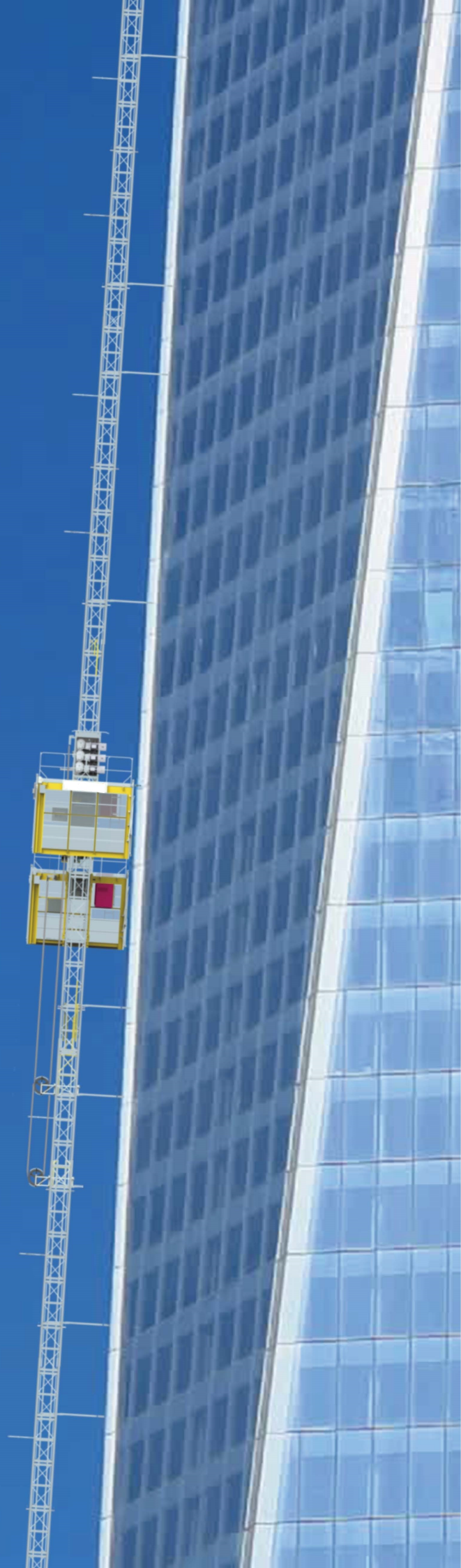
Superior operator adopt a robust design for equipment durability, a choice of door and ramp options ensure maximum usability; easy to use stop-next-landing control system allows for simple operation, LED-light in cage for maximum usability and operator comfort, optional installation crane and single or dual cage available.



Efficient

Safety

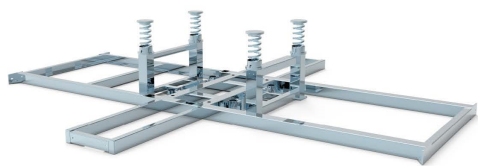
Touch the sky



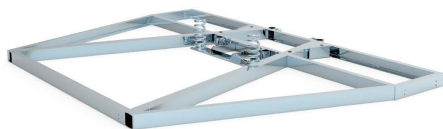
MODULAR SYSTEM CONSTRUCTION HOISTS BASE FRAME



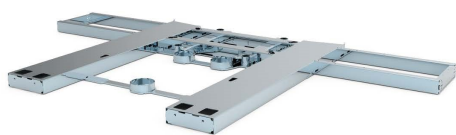
The modular BASE FRAMES design is suitable for a variety of customer needs, using high-quality materials to meet the requirements of various operating conditions. Its surface use hot dip galvanized process, durable. The size can be customized according to site conditions or customer requirements.



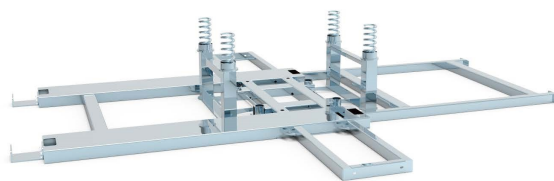
BF-A



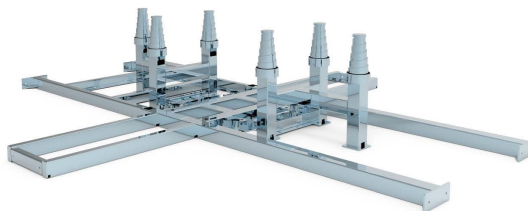
BF-C



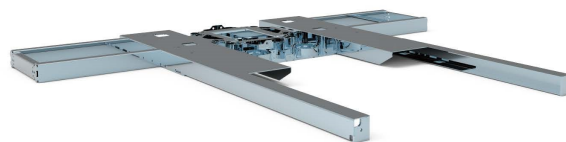
BF-E



BF-B



BF-D



BF-F



MODULAR SYSTEM CONSTRUCTION HOISTS MAST SECTION

The modular family of MAST SECTION design is very suitable for different conditions of application. High quality materials and excellent surface galvanized treatment process determines the stability and reliability of the lift operation. This modular family masts can also be matched mast climbing working platforms, material hoists, rack and pinion industrial elevators and etc.



175x175x1508



350x350x1508



350x350x1508



350x1508



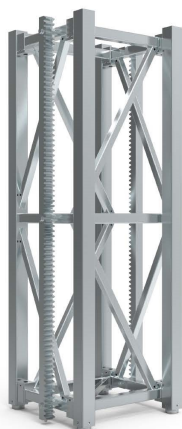
450x450x1508



450x1508



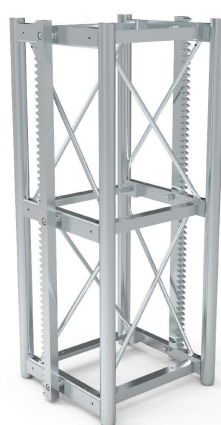
450x200x1508



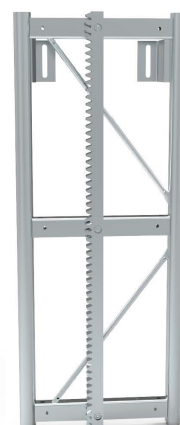
500x500x1508



500x300x1508



550x550x1508



550x1508



650x650x1508



650x250x1508



650x1508



650x900x1508



POWERFUL ENERGY SAVING



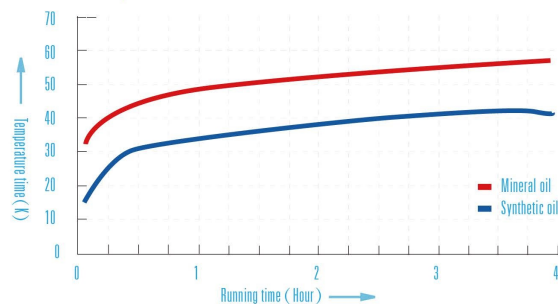
MODULAR SYSTEM CONSTRUCTION HOISTS DRIVE UNITS SYSTEM



Drive Units Features

◆ High efficiency & Low Energy Consumption
Perfectly combining the new high-precision spiral gears and the hardened helical gears, the transmission efficiency reaches up to 96%.

◆ Low Temperature Rise



Running with rated load, the oil temperature is measured according to 40% of the working time. Lower temperature of oil can extend the aging of oil seal, the new design for the sealing of shaft and the unique control system can effectively solve the leakage of oil which happens regularly in the market.

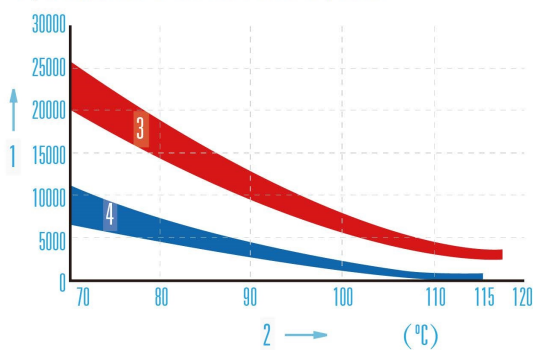
◆ Low Vibration & High Impact Resistance & Stable Operation

The gear pair has the advantages of lower noise, the stable transmission as the traditional worm gear, the better shock absorption.

◆ Long Service Life & Low Maintenance Cost

◆ Replacement time of lube oil: synthetic oil-less than 4 years, mineral oil-less than 2 years.

◆ Replacement time of lube oil: synthetic oil-less than 4 years, mineral oil-less than 2 years.



1 -Working hours 2 -Oil temperature
3 -Synthetic oil 4 -Mineral oil

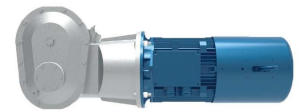
◆ Just pour 3L lube oil into the reducer

◆ More reasonable design for the gear meshing

Drive Units System Common selection



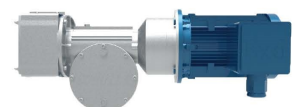
Worm Gear Drive Unit



Bevel Gear Drive Unit



Cylindrical Helical Gear Drive Unit



Explosion-proof Worm Gear Drive Unit



Explosion-proof Gear Drive Unit



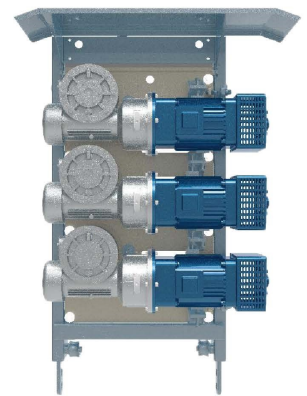
Brake



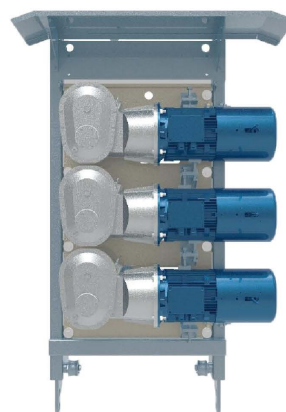
Coupler



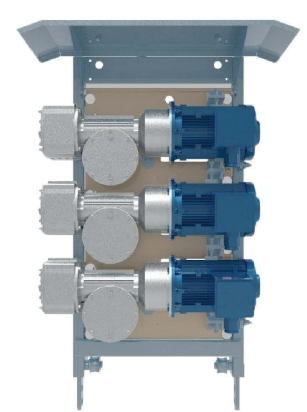
Gears



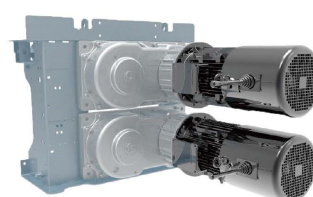
Drive unit system-A



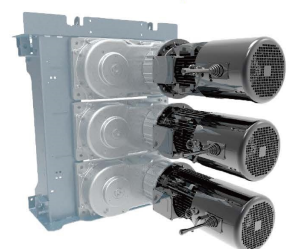
Drive unit system-B



Drive unit system-C



Drive unit system-D



Drive unit system-E

MODULAR SYSTEM CONSTRUCTION HOISTS CAGE MODULAR



Cages Showroom Features

◆ Design by using high-strength materials to ensure the stability and reliability of the cage structure

◆ Multiple modules can be selected

◆ Colors can be customized according to customer requirements

◆ In the form of a variety of doors to suit different environmental conditions

◆ Atmospheric and beautiful

◆ Carrying capacity ranging from 300kg to 3200kg

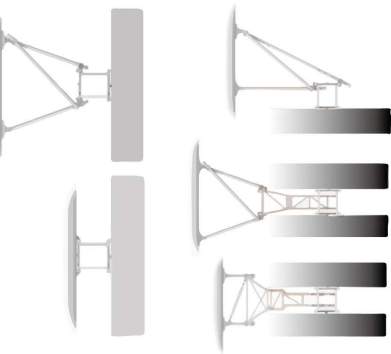
◆ Safety device consistent with national security requirements of the highest certification

◆ Door set with the mechanical and electrical interlocks to ensure maximum personal safety

◆ Provided with overload protection system

◆ Provided with failure protection system, intelligent judgment, and easy maintenance





MODULAR SYSTEM CONSTRUCTION HOISTS MAST TIE

Mast ties are special forced steel brackets and can be easily deformed. Used for construction hoists, material hoists, mast climbing working platforms, industrial lifts orbit. Because of widely interchangeability, requirement of high rigidity, and need for stable tooling guarantee. Production stiffness directly determines the reliability and stability of the lift operation.



MT-A



MT-B



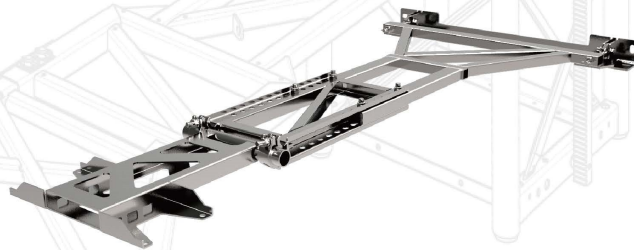
MT-C



MT-D



MT-E



MT-F



MT-G



MT-H



MT-I

MODULAR SYSTEM CONSTRUCTION HOISTS LANDING DOOR,SAFETY DEVICE,CABLE GUIDE,ELECTRIC

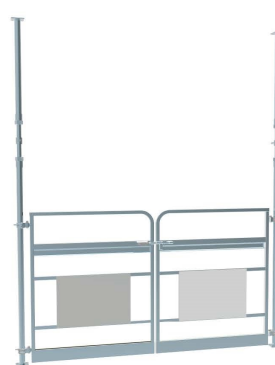
◆ LANDING DOOR



LA Type



LB Type



LC Type



LD Type

◆ SAFETY DEVICE



SAJ series safety device

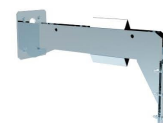


Cage door-interlocks

◆ CABLE GUIDE



Cable trolley



Cable bracket



Cable drum

◆ ELECTRIC



Vacon Inverter



Schneider Inverter



Inovance Inverter



Sinee Inverter



Resistor



Schneider AC contactor



Schneider measurement
and control relays



Schneider breaker



Overload sensor



We wins a good reputation all over the world, which is a high-tech enterprise, we only focus on construction machinery equipment. We specialize in the integration of production design, manufacture, export, and installation.



Our portfolio includes:

INDUSTRIAL LIFTS

Rack and pinion traction type lifts for tough environment



CONSTRUCTION HOISTS

Construction hoists for efficient logistics



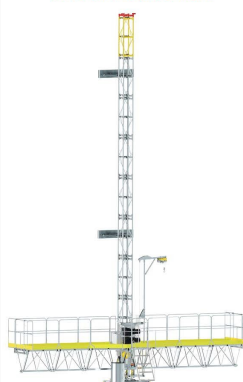
TRANSPORT PLATFORMS

Transport platforms for passengers, heavy and bulky load



WORK PLATFORMS

Work platforms for efficient facade work



SUSPENDED PLATFORMS

Suspended platforms for cleaning and maintenance of the wall



Innovation drives us to constantly surprise you value!

CARLOS MONTOYA
GERENTE GENERAL SKY COLORING
S.A.S.
NIT: 900209652-6
TV: 17 No. 98-45 OF 12-04
EDIFICIO CALLE CIEN
BOGOTA COLOMBIA
TEL: +57-1-6111119
CEL: +57-3175172207
carlos.montoya@skycoloring.com
www.skycoloring.com

